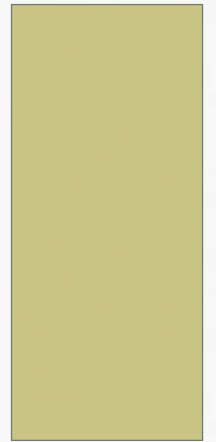


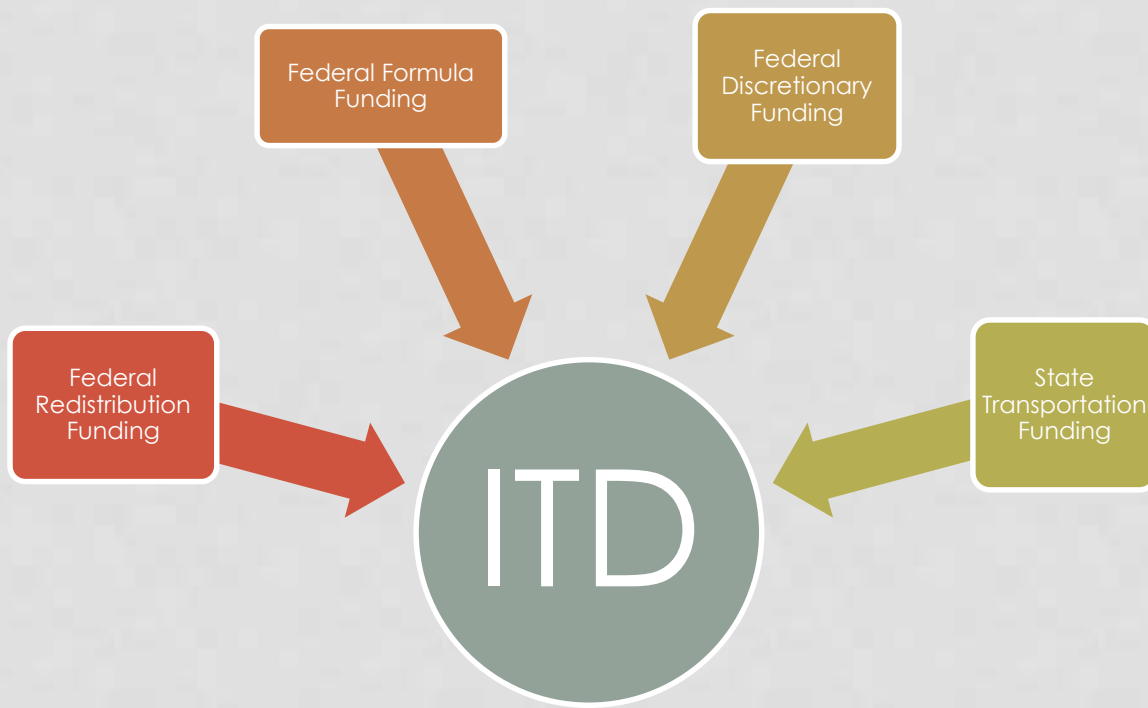
TRANSPORTATION FUNDING IN IDAHO

LORI PORRECA
COMMUNITY PLANNER
FHWA IDAHO DIVISION

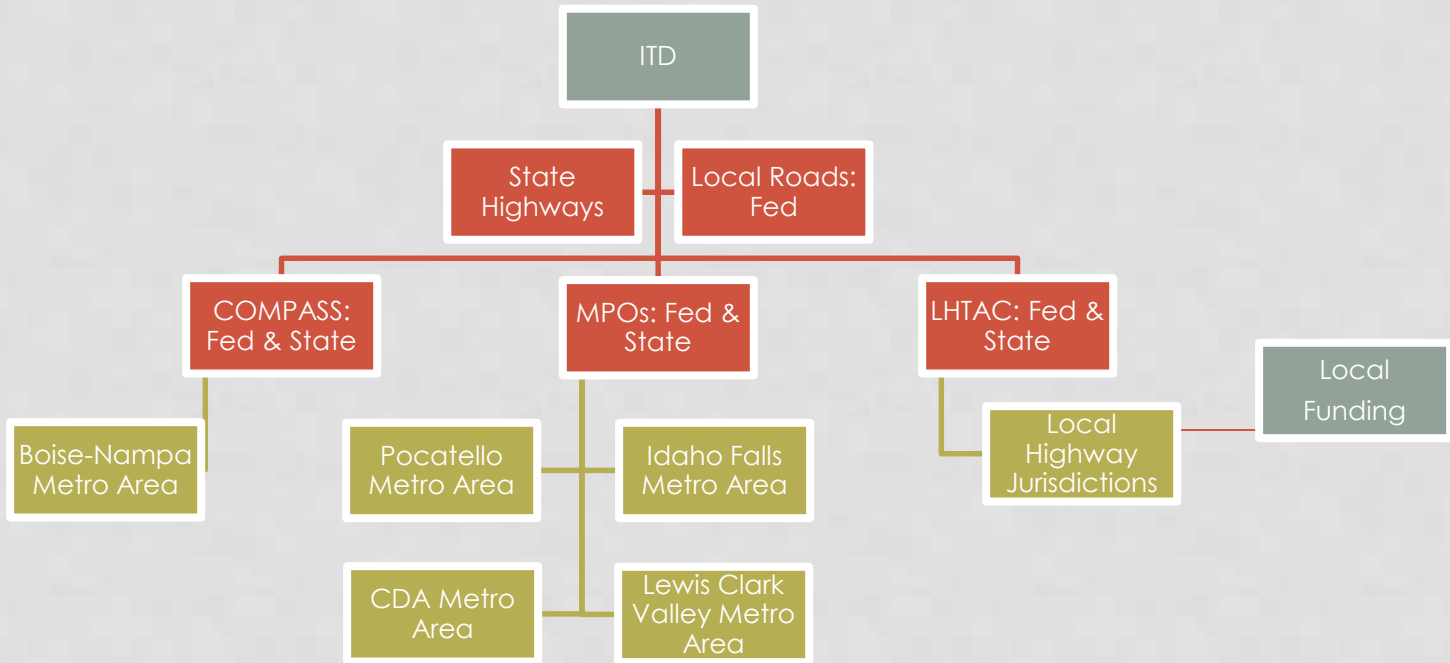


HOW DOES THE FUNDING WORK?

- Formula Funding (FY14)
 - NHPP – 166M
 - STP – 76.6M
 - HSIP – 16.5M
 - Rail-Hwy – 1.7M
 - CMAQ – 12.8M
 - MTP – 1.5M
 - TAP – 3.7M
 - RTP – 1.7M
- Discretionary
 - TIGER
- Redistribution – 14.5M
- Total Apport. – 276M
- OA – 251M
- State Funding – 300M approx.
- Local Funding - ?



TRANSPORTATION FUNDING SOURCES



FROM SOURCE TO ROAD



BREAKDOWN OF FEDERAL FUNDING

